

## PRODUCT SPECIFICATIONS

Dimensions	119mm x 68mm x 32mm (4.7" x 2.7" x 1.2")
Weight	253 grams (9 oz.)
Measurement Principle	Patented oscillometric technique with linear deflation
Measurement Ranges	Systolic 60 to 280 mmHg Diastolic 30 to 160 mmHg Pulse Rate 30 to 180 bpm
Measurement Accuracy	Blood Pressure: $\pm 3$ mmHg mean difference, $\pm 8$ mmHg standard deviation Pulse Rate: $\pm 3$ bpm According to ANSI/AAMI SP-10:2002 & British Hypertension Society; Grade: A/A
Measurement Intervals	Four adjustable intervals during 24-hour periods, each configurable to 0, 5, 10, 15, 20, 25, 30, 45, 60, 75, 90, 105, or 120-minute measurements. Optional randomization factor up to $\pm 75\%$ within intervals
Available Cuffs	EasyWear + Reusable & Disposable Regular, Large and Small Adult
Actigraphy	Recording of 3-axis of motion via accelerometer for display and categorization of awake/asleep cycles via application software
Memory	Solid-state Flash technology Sufficient for 3000 blood pressure measurements and 7 days of continuous actigraphy
PC Interface	USB
Battery	2 x 1.2V NiMH Rechargeable Batteries Sufficient for approximately 300 measurements
Software	Hypertension Diagnostics Suite for Microsoft® Windows® XP SP2 and Vista®

PART NUMBER	DESCRIPTION
001-2400-01	Ambulo 2400 Complete System: ABPM device, software CD, hook-up kit (pouch, shoulder strap, extension hose), 3 reusable cuffs (small, regular and large adult), EasyWear cuff, User's Guide w/Quick Start, 2 NiMH AA batteries, patient diary sheets (25), 1-year manufacturer's warranty
900-0001-01	Extended Warranty: this option extends the manufacturer's warranty from 1 year to 2 years
900-0002-01	Damage Protection Plan: protects the system against any and all damage the system might incur, not including theft, for the first year
900-0003-01	Premium Service Package: extends manufacturer's warranty from 1 year to 2 years, and includes 2 full years of Damage Protection Plan



### Tiba Medical, Inc.

2701 NW Vaughn St., Suite 470  
Portland, OR 97210, U.S.A.

### Toll-free U.S. & Canada

Phone/Fax: 1.800.985.8422  
Direct Phone: 1.503.222.1500

**Email:** info@tibamedical.com

**Web:** www.tibamedical.com

### Made in the USA

© 2008, Tiba Medical, Inc. All rights reserved.



# Ambulo™ 2400

## 24-Hour Ambulatory Blood Pressure Monitoring System



INNOVATION, ACCURACY & RELIABILITY



# Diagnose and Manage your Hypertensive Patients

**Having trouble managing your hypertensive patients? No problem. The Ambulo 2400 is a complete solution, giving you the tools to diagnose accurately and confidently.**

The Ambulo 2400 Ambulatory Blood Pressure Monitoring (ABPM) system offers state-of-the-art innovation, accuracy, and reliability in a sleek and easy-to-use package. It is lightweight, comfortable, and does not interfere with daily activities. The 24-hour blood pressure measurements provide you with a full picture of each patient's blood pressure over the circadian cycle. Built-in actigraphy tracks activity level during the study period and supports the automatic determination of awake/asleep cycles.



## Benefits of ABPM vs. Traditional Methods

	Home Blood Pressure	Clinic Blood Pressure	Ambulo 2400 ABPM
Assessing white coat hypertension	Limited	No	<b>Yes</b>
Determining true or mean BP	Yes	No	<b>Yes</b>
Identifying circadian or diurnal rhythm	No	No	<b>Yes</b>
Identifying nocturnal patterns	No	No	<b>Yes</b>
Evaluating the extent of the morning surge	Limited	No	<b>Yes</b>
Blood pressure variability	Limited	No	<b>Yes</b>
Evaluation of response to antihypertensive treatments	Yes	Limited	<b>Yes</b>
Determining time-dependent administration effects of treatments	Yes	No	<b>Yes</b>
Correlation of activity level with BP profile	No	No	<b>Yes</b>
Accuracy of patient recorded data	Limited	No	<b>Yes</b>

### TRULY AFFORDABLE SOLUTION

State of the art technology and features at the most competitive prices

### TRUSTED TECHNOLOGY

Patented oscillometric technology meets powerful Windows®-based software for setup, collection, analysis, and documentation

### HIGHLY ACCURATE

Validated to both British Hypertension Society and AAMI SP-10 protocols

### BUILT-IN ACTIGRAPHY

Automatic determination of asleep/awake cycles based on patented technology reduces cumbersome reliance on diaries, and enables synchronization of before/after studies in clinical review

### PATIENT COMFORT IS KEY

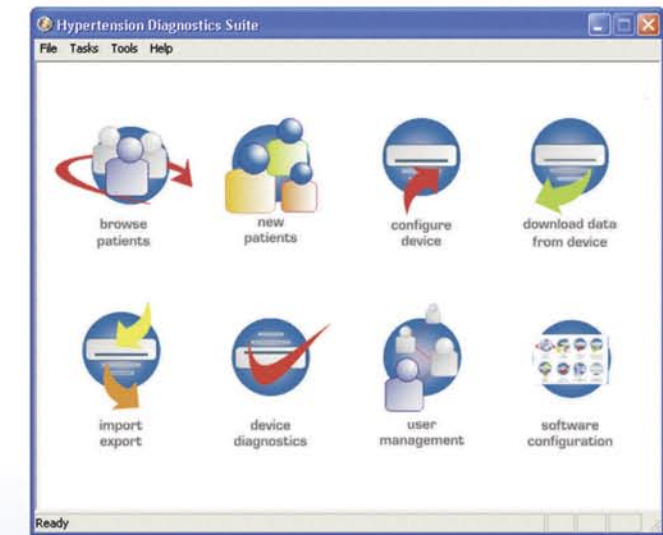
Compact, lightweight, quiet, and comfortable operation increases patient compliance and produces detailed test results. EasyWear™ cuff allows for device to be directly worn on the cuff, eliminating clutter

### EASY TO USE

Quick, easy hook-up and data capture; powerful yet simple analysis tools

### SERVICE AND SUPPORT LEADER

One or two-year manufacturer's warranty with lifetime support from our friendly, knowledgeable, and action-oriented staff



## Intuitive and Powerful Software

- Program the device, including "One Click Configuration", testing, and calibration
- Download measurements
- Track medications for each patient and study
- View graphs, statistics, and generate summary or detailed reports
- Compare studies to assess progress, including automatic asleep/awake pattern synchronization
- Import/Export data using industry-standard XML format
- Generate PDF reports for EMR/EHR applications
- HIPAA compliant

## ABPM Recommendations & Billing Codes in Clinical Practice

CPT Code: **93784**

Medicare Reimbursement Range: **\$52 - \$98**

Indication	JNC-7	WHO-ISH
White coat hypertension*	•	•
Labile hypertension	•	•
Resistant hypertension	•	•
Hypotensive episodes	•	•
Postural hypertension	•	No

JNC-7: The Seventh Report of the Joint National Committee on Prevention, Detection, Evaluation, and Treatment of High Blood Pressure.

WHO-ISH: 2003 World Health Organization (WHO)/ International Society of Hypertension (ISH) statement on management of hypertension.

\* Reimbursable in the US by the Centers for Medicare & Medicaid Services. Private providers reimburse for additional indications. Contact us for full billing and reimbursement information.